

WHAT TO EXPECT WHEN YOU VISIT

We place the utmost importance on the safety and well being of our visitors and employees. We have introduced a range of new health and safety measures, in line with government advice, that seek to reduce the risk associated with the presence of COVID-19.

BEFORE YOUR VISIT:

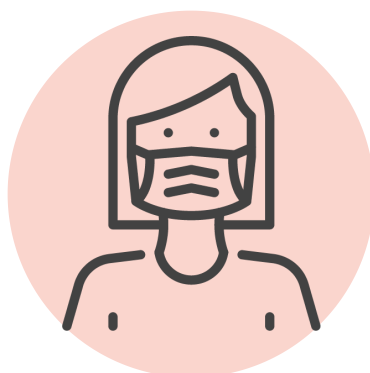


To guarantee your entry slot and reduce queuing time, please **book your timed ticket online**.

BA i360 flights operate every 30 minutes, on the hour and half hour, [click here](#) for opening hours. Please arrive at least 30 minutes before your flight time to allow for security checks and boarding.



We politely request that you refrain from visiting if you start displaying any symptoms of Covid-19. Contact our customer service team to rearrange your booking.



The wearing of a suitable face covering is required on the pod and throughout the attraction.

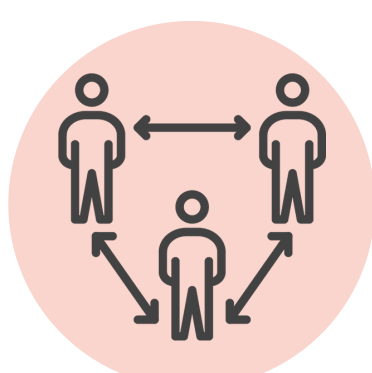


For any purchases at BA i360 we are encouraging contactless payments, so please remember to bring a suitable method with you.

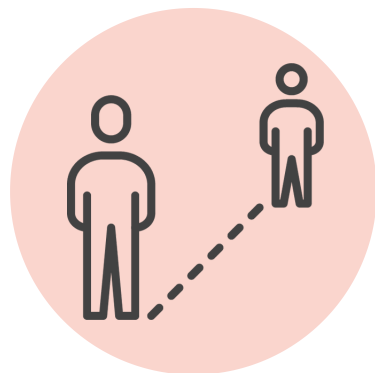
ON ARRIVAL:



Non-invasive temperature checks are a condition of entry. Any person displaying a high temperature will be denied entry.



Please maintain responsible social distancing on the pod and throughout the attraction.



We have reduced capacity on the BAi360 pod to allow for safe social distancing and the best possible visitor experience.

RESPECT THE RULES – ENJOY THE VIEWS!

For latest information and opening times:

Visit [BritishAirwaysi360.com](https://www.britishairwaysi360.com)

Subscribe to our [newsletter](#)

Follow our social media channels



HYGIENE MEASURES:



We have introduced enhanced cleaning measures, throughout the day, which seek to disinfect high-frequency touch points across the whole site. This includes cleaning the BA i360 pod, restaurant, café, and all toilet facilities.



We have introduced new Personal Protective Equipment (PPE) requirements for a range of activities that employees routinely perform. These include face masks, disposable gloves, eye protection and hand sanitiser. The use of such equipment and clothing by our employees is both to protect them and our visitors.



We have introduced several hand sanitiser stations around the attraction for visitors to use. Please take the opportunity to sanitise your hands frequently.



We have installed new hygiene screens at many of our service counters in our gift shop, café, restaurant and bar to help physically separate visitors from employees.



As with our employees, we politely request that visitors uphold the highest possible hygiene standards – through regular hand washing for at least 20 seconds, or the frequent application of hand sanitiser.



The air conditioning system on the BA i360 pod is extremely sophisticated. It has been reconfigured to bring in a continuous supply of fresh outside air which is then filtrated on entry. All air inside the pod is expelled not recirculated.

FOOD & BEVERAGE:



We are fortunate to be located right on Brighton seafront with two different outdoor spaces available for eating and drinking. All of these areas, together with our restaurant, are set for distanced dining

RESPECT THE RULES – ENJOY THE VIEWS!

For latest information and opening times:

Visit [BritishAirwaysi360.com](https://www.britishairwaysi360.com)

Subscribe to our [newsletter](#)

Follow our [social media channels](#)

